

## PINJ20



### MAIN FEATURES

- ▶ Anti-merulius (*fungicide*)
- ▶ Anti-saltpetre
- ▶ Insecticide
- ▶ Water proofing

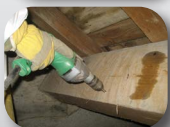


230 V



WARRANTY  
**1**  
YEAR

### Wood injection

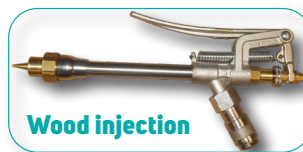


### Concrete injection

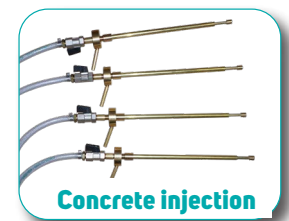


## ● SPECIFICATIONS

- Engine : 230 V - 0.6 HP single phase electric engine
- Pressure : 20 bar
- Flow rate : 19 l/mn
- Injection pump
- Pump rotation speed : 300 /650 rpm
- Engine/pump : mounted on silent blocks
- Manual pressure regulator :
  - with pressure gauge
  - with recycling and rinsing valve



Wood injection



Concrete injection

## ● STANDARD EQUIPMENT

- 0.45 m spraying lance with adjustable handle
- 12 m hose
- 1,5 m suction hose with inlet filter
- 1,5 m return hose
- 1 ankle injection nozzle wooden structures
- 4 concrete injection nozzles with independent valve
- 2 built-in sockets for plugging in lighting lamp and drill

## ● USABLE PRODUCTS

- Anti-moss
- Acid
- Water repellent
- Fungicide
- Bactericide treatment
- Phytosanitary
- Product to peel off wallpaper
- Aqueous phase product
- Chlorinated product
- Shuttering oil
- Concrete Deactivator
- Insecticide - Pesticide
- Weed killer - Fertilizer
- Solvent
- Hydrocarbon