

# DIESEL HP WASHERS

## PICKUP 15 210 YD

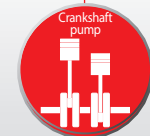


**V-belt drive**  
1 450 rpm



### MAIN FEATURES

- ▶ Long life pump
- ▶ Anti water hammer regulator
- ▶ V-belt drive
- ▶ Displacement by forklift truck



### ● SPECIFICATIONS

- Crankshaft pump (radial) 3 ceramic pistons
- Regulator : separated from the manifold with pressure drop to zero
- Diesel engine with pressure lubrication
- V-belt drive : Flexible transmission of power
- Electric start or pull start
- Board and housing : welded steel, epoxy paint
- Dimensions : 158 x 91 x 100 cm



### OPTIONS

- ▶ 1 - Turbo lance
- ▶ 2 - Sanding kit
- ▶ 3 - Hose extension
- ▶ 4 - Hydro-ejector kit
- ▶ 5 - Pipe cleaning kits

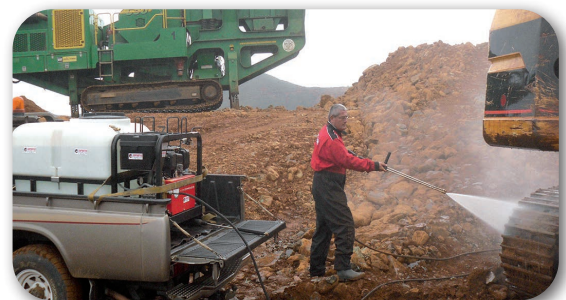
### ● STANDARD EQUIPMENT

- HP hose : 20 m 3/8 double metal braided hose
- HP spray gun with swivel link
- Double lance 1 050 mm : adjustable high and low pressure

Use :



Semi-pro Professional Intensive Super Intensive



### ● MODEL

REFERENCE	FLOW RATE		PRESSURE	POWER		PUMP			TANK	FRAME	WEIGHT
	l/min	l/h		Engine	HP	rpm	Brand	Oil			
PICKUP 15 210 YD	15	900	210	YANMAR	10	1 450	INTERPUMP	15W40	500 l	Pickup	270

**Check our recommended very high pressure personal protective equipment !**



SAT DIMACO Constructeur, ZI Rue Gustave Eiffel, 37500 CHINON (France) - Tel. +33 (0)2 47 98 25 36  
export@dimaco.com - www.dimaco.com